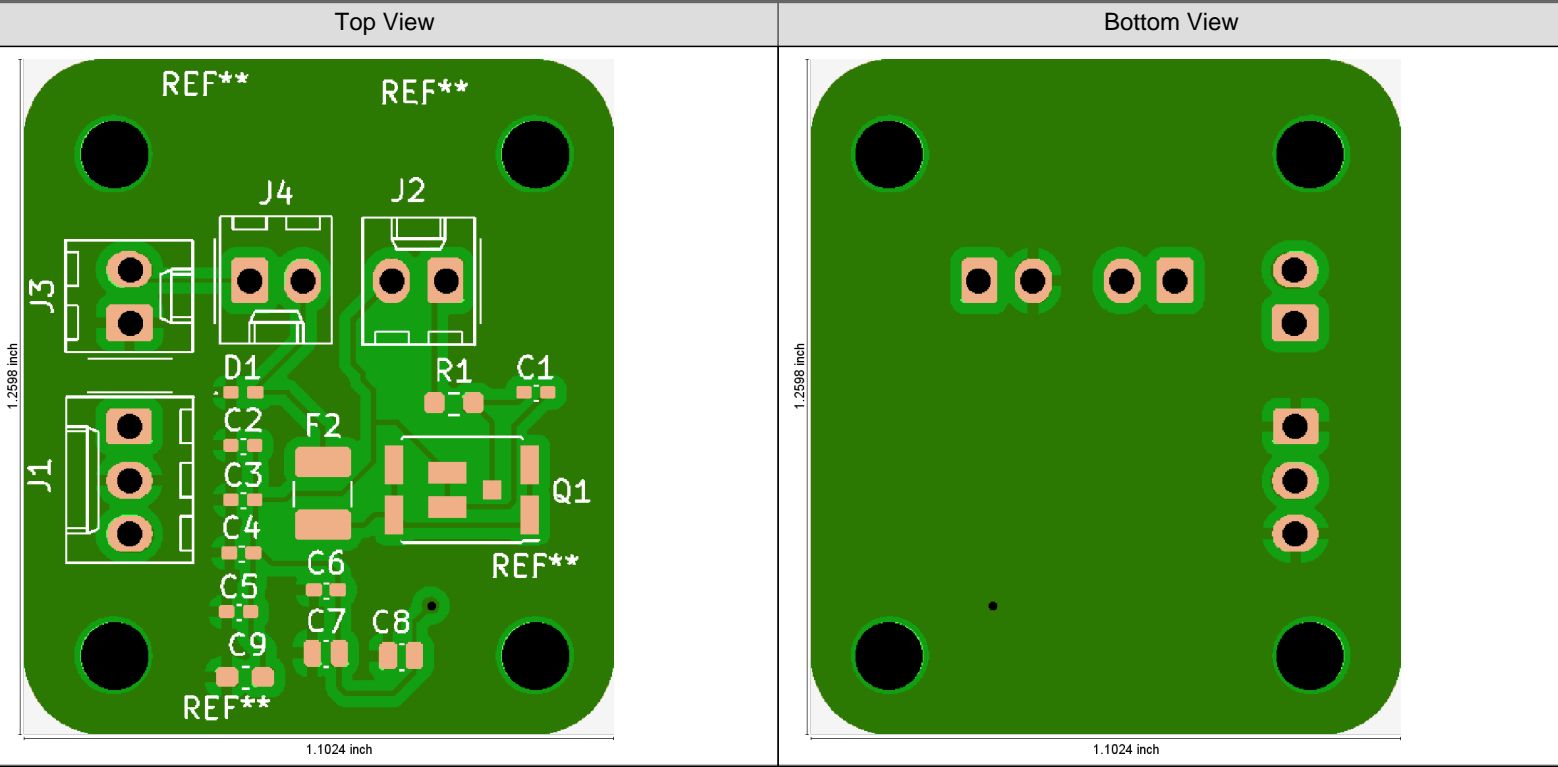


Name	x708bx8o.zip	Id.	22830 - QED OK
Report Generated on	Oct 3, 2025, 8:10:15 PM	Customer	InstantDFM

Single PCB View - Original



Summary - General - Original

PCB Size	1.102 inch x 1.26 inch	Customer Panel Size	
PCB Thickness	62.992 mil	Max. Aspect Ratio on PTH	4.0
Copper Layers	2	Pressing Stages	1
Surface Finish	None	Drill Hole Density	10 Holes/inch ²
Solder Mask	Both	Testable Points	49
Solder Mask Color	Green	Min. SMD/BGA Size	24.41 mil
Legend	Top Only	Via in Pad	No
Legend Color	White	Stacked Vias	
Edge Connector Area	0 inch ²	Castellated	No
Peeloff Mask	No	Anomalies	Yes
Carbon Mask	No		

Summary - Copper Layer Minima - Original

Type	Copper Width	Critical Copper Width	Trace Width	Critical Trace Width	Copper to Copper Clr.	Trace to Trace Clr.	Same Net Clr.	Ring	Copper to Plated Clr.	Copper to NPTH Clr.	Copper to Outline Clr.
	mil	mil	mil	mil	mil	mil	mil	mil	mil	mil	mil
Outer	¹ 9.84	² 9.84	³ 9.84	⁴ 9.84	⁵ 7.87	⁶ 15.81	⁷ 19.68	⁸ 7.90	⁹ 27.92	¹⁰ 9.81	¹¹ 0.00

Name	x708bx8o.zip	Id.	22830 - QED OK
Report Generated on	Oct 3, 2025, 8:10:15 PM	Customer	InstantDFM

Summary - Sequences - Original

Type	Sequences	Tools	Min. End Dia.	Max. End Dia.	Holes	Routes	Ring on Outer	Ring on Inner	Hole to Copper Clr.
			mil	mil			mil	mil	mil
PTH	1	2	15.70	46.90	10	0	7.90		27.92
NPTH	1	1	126.00	126.00	4	0	>32.00		9.81
Total	2	3	15.70	126.00	14	0	7.90		9.81

Solder Mask - Original

Side	Mask to Mask Clr.	Web	Ring on Cu Defined Pads	Ring on SM Defined Pads	Mask to Copper Clr.	Mask Opening	Fully Covered Via Holes	Partly Covered Via Holes	One Side Covered Vias	Both Sides Covered Vias	No Side Covered Vias
	mil	mil	mil	mil	mil	mil					
Top	>10.00	>10.00	>10.00	>10.00	7.87	24.41	Yes	No			
Bottom	>10.00	>10.00	>10.00	>10.00	9.86	68.50	Yes	No			
Both	>10.00	>10.00	>10.00		7.87	24.41	Yes	No	No	Yes	No

Stackup - Original

legend

soldermask

1

2

soldermask

horns_proj-F_Silkscreen_gbr

horns_proj-F_Mask_gbr

1.378 horns_proj-F_Cu_gbr

59.449 FR4

1.378 horns_proj-B_Cu_gbr

horns_proj-B_Mask_gbr

horns_proj-NPTH_drl

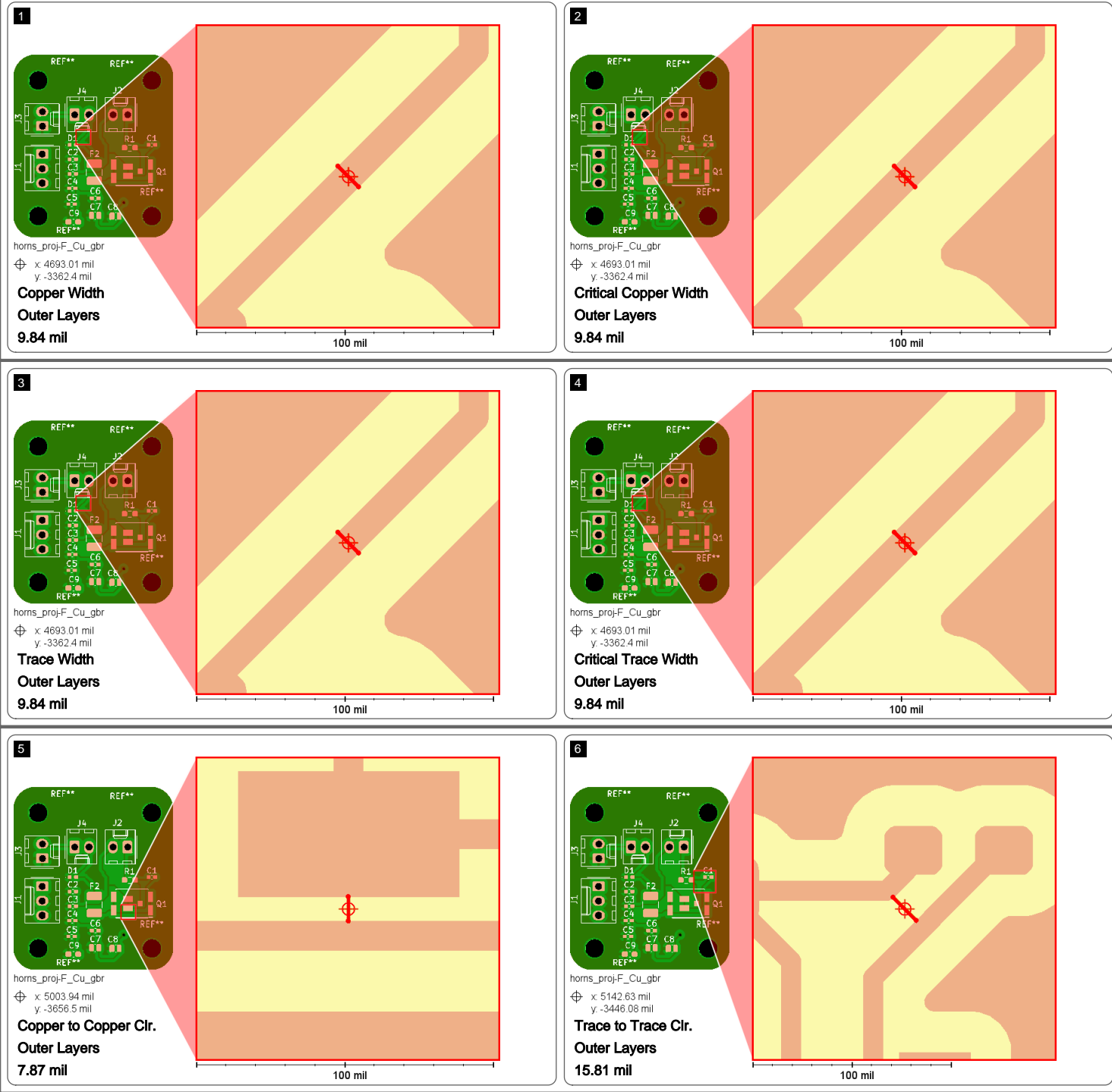
horns_proj-PTH_drl

Pressing Stages

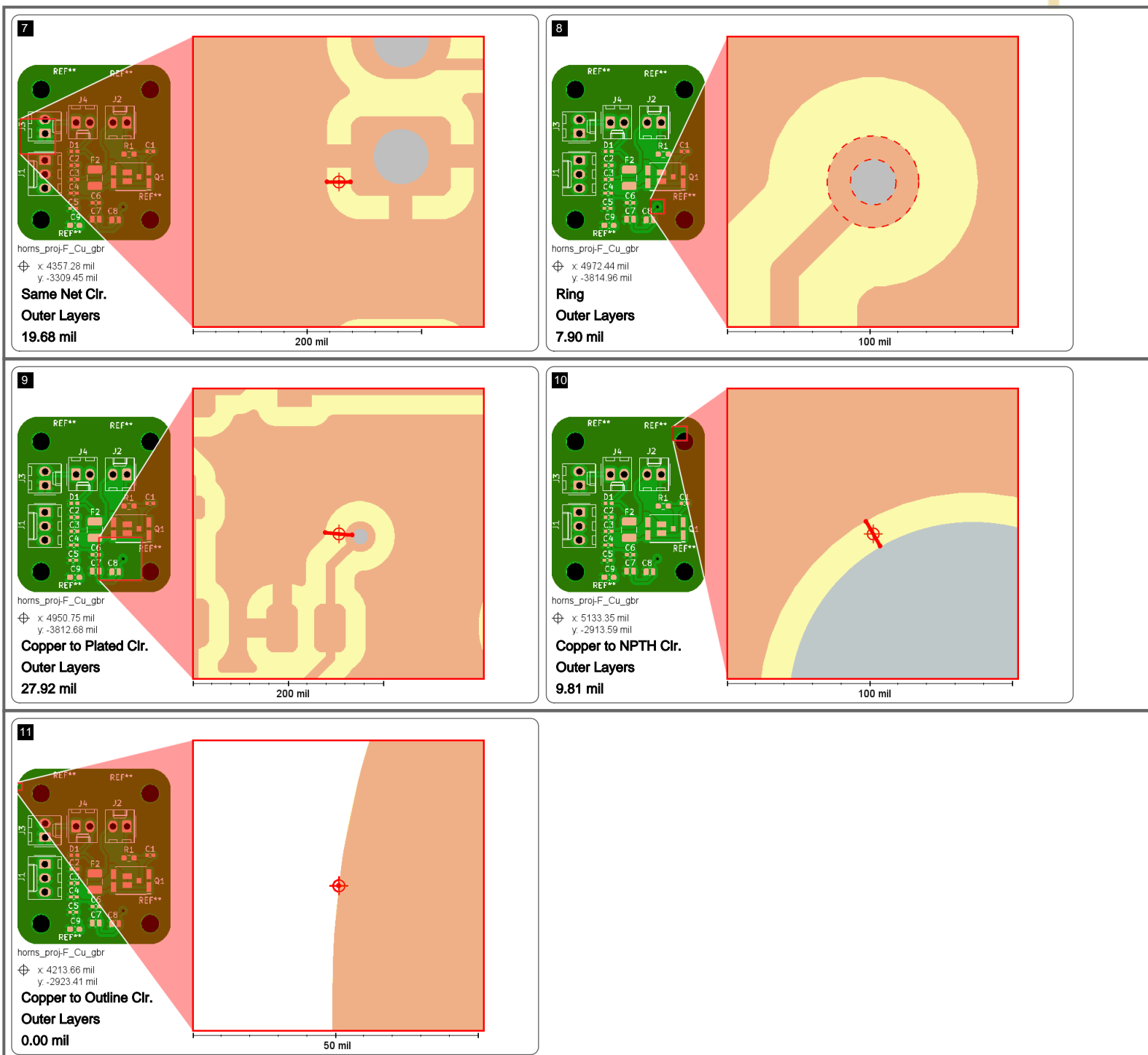
1

Name	x708bx8o.zip	Id.	22830 - QED OK
Report Generated on	Oct 3, 2025, 8:10:15 PM	Customer	InstantDFM

Summary Minimum Design Characteristics - Locations - Original



Name	x708bx8o.zip	Id.	22830 - QED OK
Report Generated on	Oct 3, 2025, 8:10:18 PM	Customer	InstantDFM



Copper Layer Minima & Area - Original

File	Pos.	Copper Width	Critical Copper Width	Trace Width	Critical Trace Width	Copper to Copper Clr.	Same Net Clr.	Copper Area	
		mil	mil	mil	mil	mil	mil	inch ²	%
horns_proj-F_Cu_gbr	1	9.84	9.84	9.84	9.84	7.87	19.68	1.0511	77
horns_proj-B_Cu_gbr	2	>16.00	>16.00	>16.00	>16.00	20.02	19.68	1.2487	91

Name	x708bx8o.zip	Id.	22830 - QED OK
Report Generated on	Oct 3, 2025, 8:10:18 PM	Customer	InstantDFM

Copper Layer Minima - Copper to Drill Minima - Original

File	Pos.	Ring					Copper to Drill Clr.		Copper to Outline Clr.			
		Overall	Via	Laser Via	Comp.	Mech.	Plated	NPTH	Overall	to Pad	to Trace	to Region
		mil	mil	mil	mil	mil	mil	mil	mil	mil	mil	mil
horns_proj-F_Cu_gbr	1	7.90	7.90		10.75		27.92	9.81	0.00	>64.00	>64.00	0.00
horns_proj-B_Cu_gbr	2	10.75	>32.00		10.75		30.77	9.81	0.00	>64.00	>64.00	0.00

Drill Tools - Original

File	Tool Nr.	Span	Type	Function	Method	Filled Via	Counter	Dia.	Tol. -	Tol. +	Holes in PCB	Routs in PCB	Double Hits	Predrill Hits
								mil	mil	mil				
horns_proj-NPTH_drl	1	1-2	NPTH	mech.	mech.	unknown	unknown	126.00	0.00	0.00	4	0	0	0
horns_proj-PTH_drl	1	1-2	PTH	via	mech.	unknown	unknown	15.70	0.00	0.00	1	0	0	0
horns_proj-PTH_drl	2	1-2	PTH	comp.	mech.	unknown	unknown	46.90	0.00	0.00	9	0	0	0

Drill Tools - Drill vs Copper - Original

File	Tool Nr.	Span	Type	Function	Method	Dia.	Ring on Outer	Ring on Inner	Min. Pad Size	Via in Pad	Plated to Copper Clr. 🔗			
											Overall	to Pad	to Trace	to Region
						mil	mil	mil	mil		mil	mil	mil	mil
horns_proj-NPTH_drl	1	1-2	NPTH	mech.	mech.	126.00	>32.00							
horns_proj-PTH_drl	1	1-2	PTH	via	mech.	15.70	7.90		31.50	0	27.92	>32.00	>32.00	27.92
horns_proj-PTH_drl	2	1-2	PTH	comp.	mech.	46.90	10.75		68.40		30.77	>32.00	>32.00	30.77

Sequences - Original

Span	Type	Tools	Min. End Dia.	Max. End Dia.	Holes	Ring on Outer	Ring on Inner	Hole to Copper Clr.	Hole to Outline Clr.	Slot to Outline Clr.
			mil	mil		mil	mil	mil	mil	mil
1-2	PTH	2	15.70	46.90	10	7.90		27.92	173.35	>256.00
1-2	NPTH	1	126.00	126.00	4	>32.00		9.81	84.47	>256.00
All	All	3	15.70	126.00	14	7.90		9.81	84.47	>256.00

Rout Tools - Original

File	Tool Nr.	Type	Tool Dia.	End Dia.	Rout Length	Nibble Count
			mil	mil	mil	

Routed Holes - Original

File	Hole Nr.	Instances	X Size	Y Size	Rout Length	Nibble Count
			mil	mil	mil	

Name	x708bx8o.zip	Id.	22830 - QED OK
Report Generated on	Oct 3, 2025, 8:10:18 PM	Customer	InstantDFM

Files - Original

Initial	Renamed	Function	Position	Color	Thickness	
					Base	Finished
					mil	mil
horns_proj-F_Paste.gbr		paste	top			
horns_proj-F_Silkscreen.gbr		silk	top	white	unknown	unknown
horns_proj-F_Mask.gbr		mask	top	green	unknown	unknown
horns_proj-F_Cu.gbr		outer	1		unknown	unknown
horns_proj-B_Cu.gbr		outer	2		unknown	unknown
horns_proj-B_Mask.gbr		mask	bottom	green	unknown	unknown
horns_proj-NPTH.drl		nonplated	1-2			
horns_proj-PTH.drl		plated	1-2			
horns_proj-B_Paste.gbr		empty	none			
horns_proj-B_Silkscreen.gbr		empty	none			
horns_proj-Edge_Cuts.gbr		cad_outline	none			

Input Remarks - Original

Gerber import: Invalid coincident draw, continuing without cleanup 'horns_proj-B_Cu.gbr'

Gerber import: Invalid coincident draw, continuing without cleanup 'horns_proj-F_Cu.gbr'

Gerber import: Invalid contour, continuing with an interpretation. Cannot be cleaned up automatically. Must be cleaned up manually. 'horns_proj-F_Cu.gbr' (at line 2344)

DISCREPANCY: Extra bottom layers mismatch between Gerber Job File and current job stackup.

OMITTED: \$.MaterialStackup[7] not added to layer attributes because corresponding layer could not be found.

OMITTED: \$.MaterialStackup[8] not added to layer attributes because corresponding layer could not be found.

Comments - Original